

Technical Data Sheet_ SH36 Wireless 2.4G CCT 2x2 Panel Light



Product Details

Code : SH36 Wireless 2x2 Panel Light
 Model : Colour Changeable 2.4G CCT
 Make : SHINE PLUS

Electrical Data

Power Consumption : 36W
 Operating Voltage Range: 85VAC-265VAC
 Frequency : 50 Hz
 Power Factor : > 0.95
 THD : < 12%
 Driver : Dimmable Driver (External)
 Efficiency : > 85%

Light Data

Light source (LED): Edison
 Efficacy : 110 lm/Watt
 Luminous flux : 3960 lumens
 Colour temperature: 3000K-6500K 2.4G RF
 CRI : >80
 Average Life : L70 @ 40,000 Hours.

Environmental

Working Temperature: 0 °C to + 55 °C
 Working Humidity : 10 to 90% RH
 Storage Temperature: 0°C TO + 85 °C
 IP Rating : IP20 Protected from touch by fingers and objects greater than 12 MM.
 Not protected from liquids

Protection

Input Overvoltage/Under voltage : Protected
 High voltage standing : Protected
 Output Short circuit : Protected
 Voltage Power Fluctuations/Surge : Protected

Physical Details

Material : Aluminium Die cast
 Dimensions : 595 x 595 MM
 Cut out : 590 MM
 Suitable Fixing : Recessed

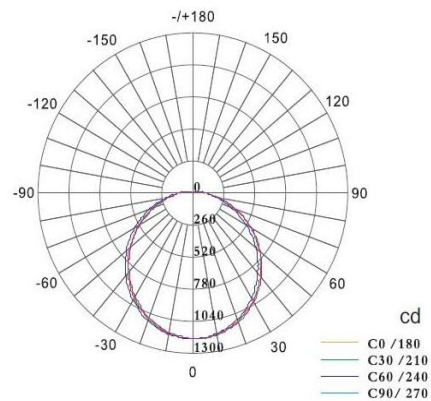
Applications : Indoor

Application Area : Commercial and residential
 Hotels and restaurants
 Shops and showrooms

Warranty : 2 Years

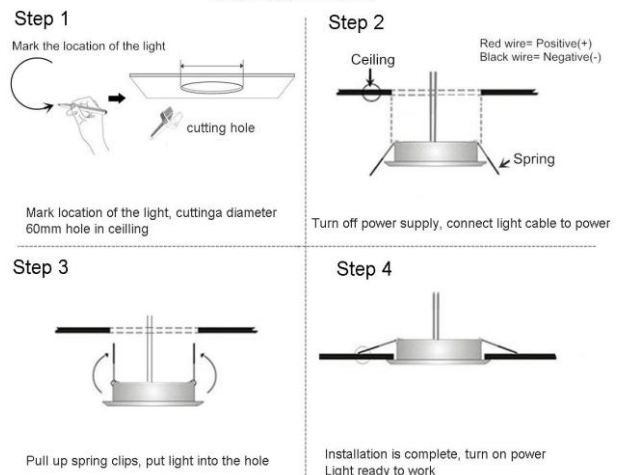


BIS Registration No. IS/IEC 10322 :Part 5/Sec 7: 2017 R- 41101117



Light Distribution

Installation Guide



www.shineplusled.com

